

TAXING UNIT: 10,66

SE 1/4 OF NE 1/4 OF SECTION 4, T.6N., R.1W., S.L.B. & M.

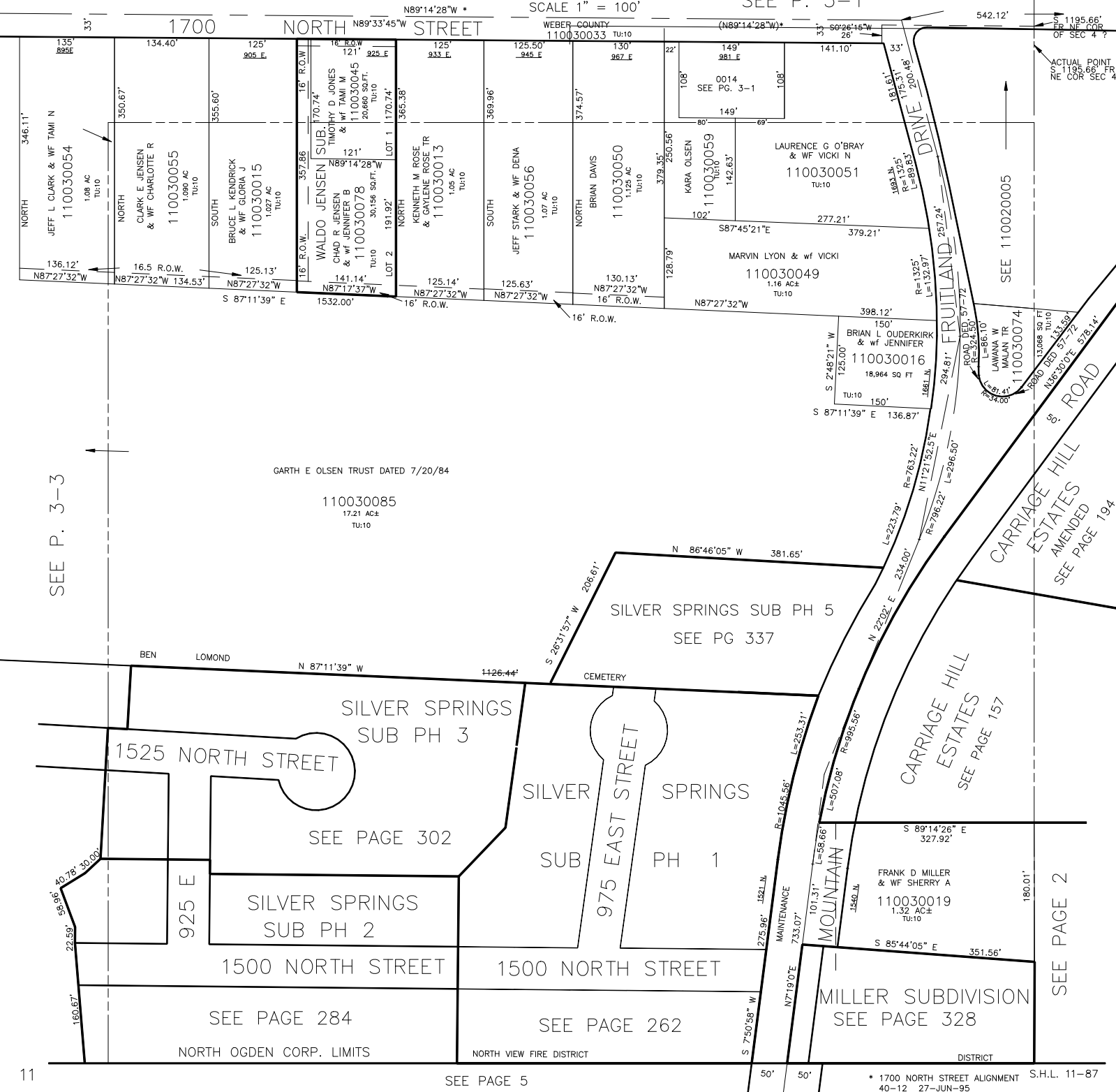
3-2

IN NORTH OGDEN CITY

ALSO SEE P. 3-3,4

SCALE 1" = 100'

SEE P. 3-1



SEE P. 3-3

CARRIAGE HILL ESTATES AMENDED SEE PAGE 194

CARRIAGE HILL ESTATES SEE PAGE 157

SEE PAGE 2